

Year 3 Summer Term Knowledge Organiser



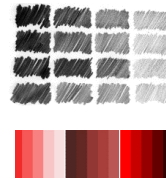
Athens and Sparta were **city-states** in the Ancient Greek **civilisation**.



Ancient Greeks worshipped multiple Gods and Goddesses. They used art to share stories and **myths**.



Ancient Greeks told their **myths** by drawing them on vases.



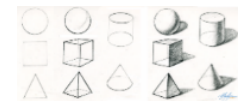
We can use different **tints** and **tones** of colour to show how we feel.



Light **tones** are made by 'H' pencils. Darker **tones** are created by 'B' pencils.



Hatching, crosshatching, **scumbling** and stippling are all shading techniques used to create **tone**, **texture** and **shadows**.



Shading techniques gives **art form**.



Artists use **complementary** colours to make parts of their artwork stand out



Artists use **line**, **tone**, and shape to create **dimension** and **proportion** in their art.



L.S Lowry was an English **naïve** artist. Lowry used dark, gloomy **tones** to tell a story.



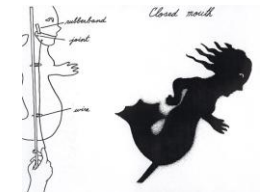
Edward Hopper was an American realist painter. Hopper sometimes used brighter colours to tell a story.



The term **democracy** originated in Ancient Greece.



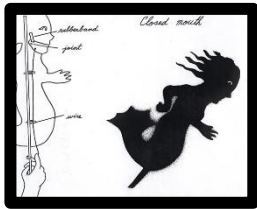
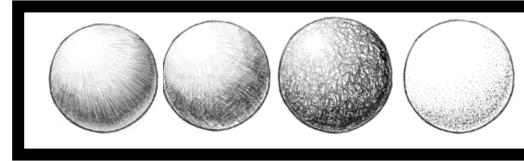
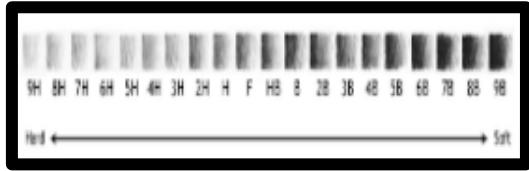
A shadow puppet tells a story through **silhouette**, movement and **design**.



A **butt joint**, folding, gluing, tying and split pins are all joining techniques.

Year 3 Summer Term Key Vocabulary

city-states	Small areas in Ancient Greece that ruled themselves, like little countries.
civilisation	A group of people living together with their own laws, buildings, and ways of life.
myths	An ancient story or set of stories – especially old stories Ancient Greeks told about gods, heroes and monsters.
tints	When white is added to a colour.
tone(s)	A form or degree of a colour.
texture	How something feels to touch or looks like it would feel.
shadows	An area of darkness, caused by light being blocked by something.
form	When an object in art is 3D or looks 3D.
complementary colours	Colours that are opposite each other on the colour wheel and make each other look brighter.
dimension	A measurement of something in a particular direction like height – in art, it is making something look 3D instead of flat.
proportion	The relationship of one thing to another in terms of quantity, size, or number.
naïve	A simple and child-like style of art that doesn't always look realistic.
democracy	A system of government in which people vote to make decisions on who holds the power.
silhouette	A dark shape seen against a light surface.
design	To make or draw plans for how something will look and work.
butt joint	A way of joining two pieces of material by placing their ends together.



How do the arts tell a story?

